



WOODMASTER

FOR PETS

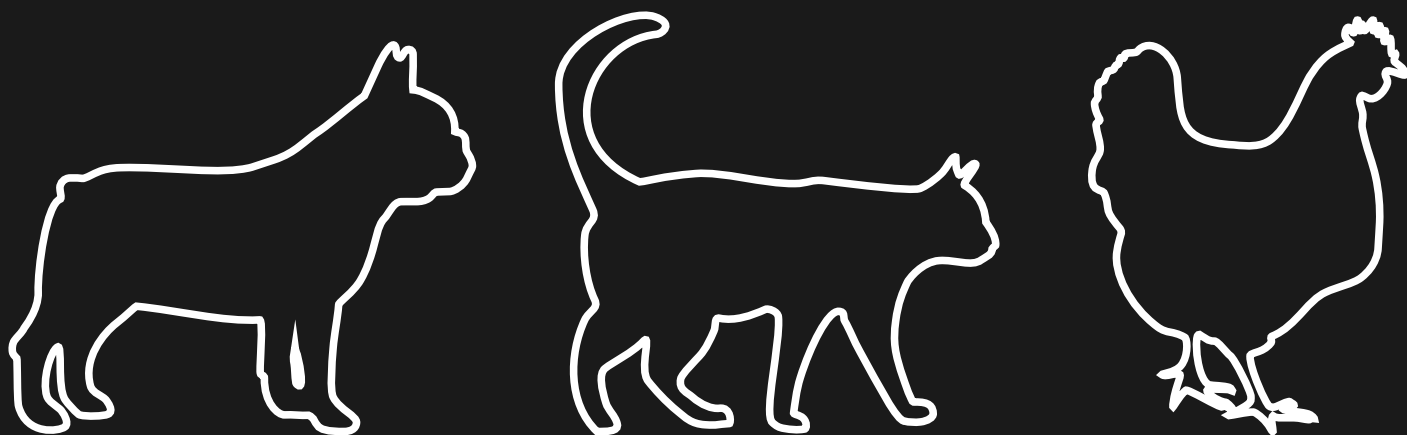
SINCE 2015

WOODMASTER IS A MODERN WOOD PROCESSING AND FURNITURE FACTORY, EQUIPPED WITH CONTEMPORARY MACHINERY IS ABLE TO DESIGN AND PRODUCE THE FINEST WOODEN PRODUCTS IN YOUR DEFINED SUFFICIENT QUANTITIES.

AT WOODMASTER WE STRIVE TO BE A LEADING INTERNATIONAL WOOD PROCESSING AND FURNITURE MANUFACTURER, OFFERING INNOVATIVE AND SUPERIOR QUALITY PRODUCTS. WE WANT OUR CUSTOMERS TO EXPERIENCE THE WOODMASTER WARMTH AND COMFORT THROUGH OUR RESPECT, TRUST, RELIABILITY AND FLEXIBILITY.

#### ADVANTAGE OF MADE IN GEORGIA

STRATEGICALLY LOCATED AT THE CROSSROADS OF TRADE AND COMMERCE BETWEEN EAST AND WEST, WOODMASTER IN GEORGIA IS IDEALLY POSITIONED TO GET ACCESS AT MARKETS OF ASIA AND EUROPE, AS WELL AS THE MIDDLE EAST AND THE CIS COUNTRIES. BUSINESS-FRIENDLY REGULATIONS, A FAVORABLE TAX AND CUSTOMS FRAMEWORK AND RELATIVELY LOW-COST WORK ENVIRONMENT CAN PLAY A KEY ROLE IN YOUR BUSINESS STRATEGY.



**Concept Catalogue**

## Briefly About Us

Company as WOODMASTER was established in 2015 in Tbilisi Georgia

**2019** - company was recognized as one of the fast growing Company of Georgia.

**2019** - Retail Brand **HOMEMODERATOR**

**2019** - daughter company FELDER GEORGIA (Georgian representation of FELDER KG Austria)

Factory land area **13000 m<sup>2</sup>**

Buildings **3200 m<sup>2</sup>**

Employees - **56**

WOODMASTER is equipped with Modern and brand new equipment as CNC, automatized, semi automatized and manual operating machineries.







# “KAIZER”

## Dog Kennel

The **KAIZER** Dog Kennel stands out with its unique design, finishing quality and easy assembling. Painted with no smell and TOYSAFETY paint according STANDARD EN71-3, with ecosolution and natural wax content provides up to 4 year protection for outdoor usage.

Material: Pine or Spruce

Dimension: W96xH95xD110

Weight : ~ 30kg

can be packed in 1 or 2 separate carton box

also Can be provided in dimensions:

·76x75x90

·56x55x70



# “ZAENDA”

## Chicken Coop

The **ZAENDA** Chicken Coop stands out with its unique design, finishing quality and easy assembling. **ZAENDA** can easily accommodate up to 5 Chicken. It includes inside 2 separated laying area and is easy to access from the top of the chicken coop. Painted with no smell and TOYSAFETY paint according STANDARD EN71-3, with ecosolution and natural wax content provides up to 4 year protection for outdoor usage.

- Two Perches
- Two stepladders
- Two doors
- Drawers for easy cleaning
- Painted with no smell and TOYSAFETY paint according STANDARD EN71-3
- Plastic feet

Material: Pine or Spruce, galvanized metal sheet

Dimension: W80xH130xD110

Weight : ~ 38kg

can be packed in 1 or 2 separate carton box





# “ZENONI”

## Pet Bed

The **ZENONI** luxury pet bed stands out with its unique design, finishing quality and easy assembling. Painted with no smell and TOYSAFETY paint according STANDARD EN71-3, with ecosolution and natural wax content provides up to 4 year protection even for outdoor usage.

Stylish design of **ZENONI** bed gives an attractive look to any interior.

Material: Beech tree, Plywood, Long plush Cushion

Dimension: W66xH55xd65

Weight : ~ 5 kg

Packed in 1 Carton box

# “COZINI L”

## Pet Bed

The “**COZINI L**” pet bed stands out with its unique design, finishing quality and no nail&screw assembling. Painted with no smell and TOYSAFETY paint according STANDARD EN71-3, with ecosolution and natural wax content provides up to 4 year protection even for outdoor usage.

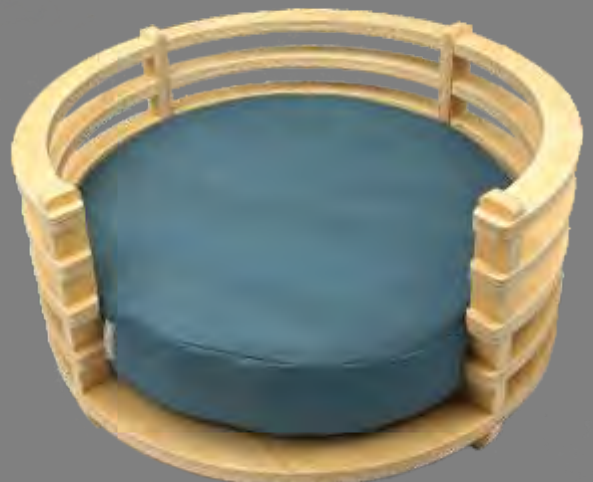
Stylish design of “**COZINI L**” bed gives an attractive look to any interior.

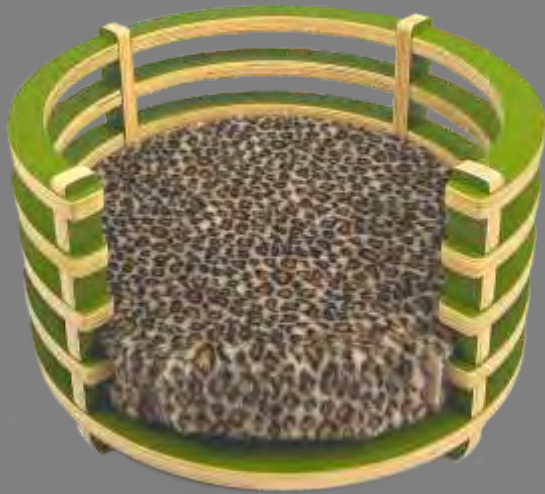
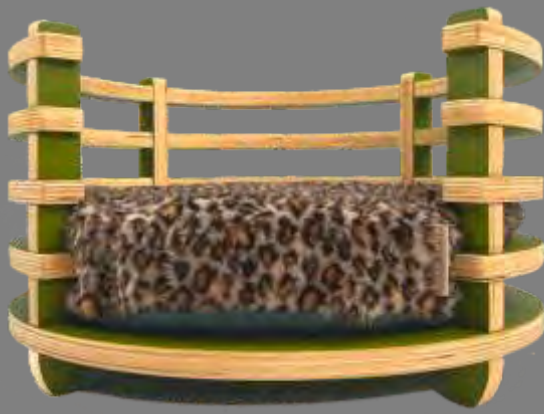
Material: Plywood, Textile or Imitation fur cushion

Dimension: W50xH24xD50

Weight : ~ 4kg

Packed in 1 Carton box





# “COZINI M”

## *Pet Bed*

The “COZINI M” pet bed stands out with its unique design, finishing quality and no nail&screw assembling. Painted with no smell and TOYSAFETY paint according STANDARD EN71-3, with ecosolution and natural wax content provides up to 4 year protection even for outdoor usage.

Stylish design of “COZINI M” bed gives an attractive look to any interior.

Material: Plywood, Textile or Imitation fur cushion

Dimension: W40xH24xD40

Weight : ~ 3kg

Packed in 1 Carton box

# “COZINI S”

## *Pet Bed*

The “COZINI S” pet bed stands out with its unique design, finishing quality and no nail&screw assembling. Painted with no smell and TOYSAFETY paint according STANDARD EN71-3, with ecosolution and natural wax content provides up to 4 year protection even for outdoor usage.

Stylish design of “COZINI S” bed gives an attractive look to any interior.

Material: Plywood, Textile or Imitation fur cushion

Dimension: W30xH24xD30

Weight : ~ 2.5kg

Packed in 1 Carton box





# “VYNIL”

## Pet Bed

The **VYNIL** pet bed stands out with its unique design, finishing quality and no nail&screw assembling. Painted with no smell and TOYSAFETY paint according STANDARD EN71-3, with ecosolution and natural wax content provides up to 4 year protection even for outdoor usage.

Stylish design of **VYNIL** bed gives an attractive look to any interior.

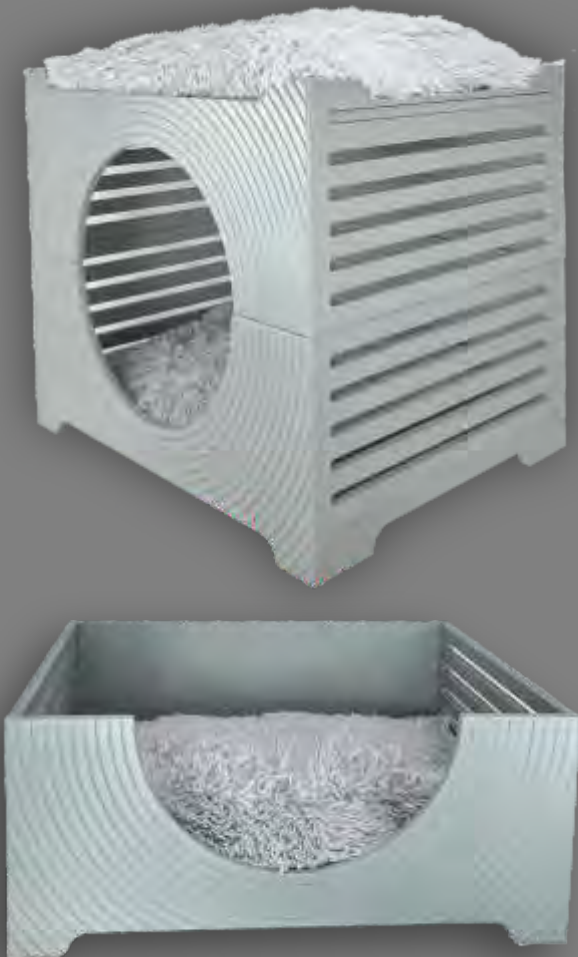
buying two pet bed of **VYNIL** you can attach them to one each other and you will have stylish pet house with resting area on top too.

Material: Plywood, Textile or Long plush Cushion

Dimension: W70xH30xD53

Weight : ~ 8,5kg

Packed in 1 Carton box



# “ARGO”

## Transport Box

The **ARGO** pet Luxury Transport box stands out with its unique design, finishing quality and no nail&screw assembling. Painted with no smell and TOYSAFETY paint according STANDARD EN71-3, with ecosolution and natural wax content provides up to 4 year protection even for outdoor usage. Metal details are painted with electrostatic paint.

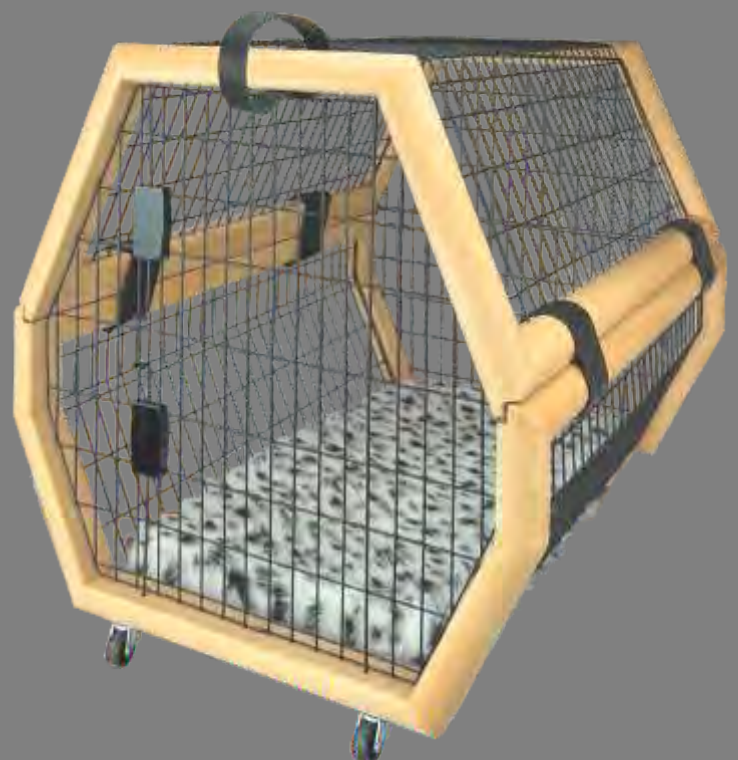
- Four 360° Roller
- Natural Leather handle
- Four Natural Leather Belts
- Metal wire Door with two side Lock
- Imitation fur cushion

Material: Beech Tree, Metal wire mesh, Natural Leather, Textile or Long plush Cushion.

Dimension: W56xH56xD76

Weight : ~ 10kg

Packed in 1 Carton box



# “TOMMIE”

## CAT TREE



The **TOMMIE** wall mounting Cat Tree stands out with its unique design, finishing quality and easy assembling. Painted with no smell and TOYSAFETY paint according STANDARD EN71-3, with ecosolution and natural wax content provides up to 4 year protection even for outdoor usage.

- Three stairs
- Imitation fur cushion
- Natural Sisal Carpet for to prevents ingrowing nails
- Wall mounting

Material: Plywood, Sisal carpet, Imitation fur cushion

Dimension: W575xH125xD39

Weight : ~ 7,5kg

can be packed in 1 or 2 separate Carton box

# “MIRTH”

## SCRATCHING BOARD

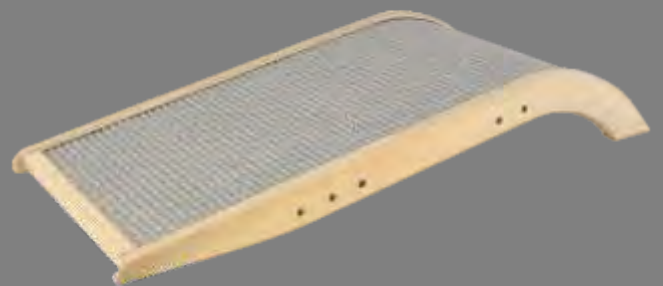
The **MIRTH** Scratching Board stands out with its portable design, finishing quality and easy assembling. Painted with no smell and TOYSAFETY paint according STANDARD EN71-3, with ecosolution and natural wax content provides up to 4 year protection even for outdoor usage. Natural Sisal Carpet will help Cats to remove the flaky top layer of the nails.

Material: Plywood, Natural Sisal Carpet

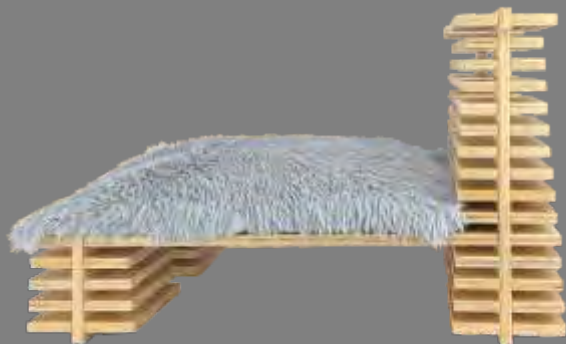
Dimension: W62xH9xD25

Weight : ~ 1,5kg

Packed in 1 Carton box







# “REGNOOM”

## Pet Bed

The **REGNOOM** pet bed stands out with its unique design, finishing quality and no nail&screw assembling. Painted with no smell and TOYSAFETY paint according STANDARD EN71-3, with ecosolution and natural wax content provides up to 4 year protection even for outdoor usage.

Stylish design of **REGNOOM** bed gives an attractive look to any interior .

Material: Plywood, Cushion with long plush

Dimension: W50xH37xD61

Weight : ~ 9,5kg

can be packed in 1 or 2 separate Carton box



# “CLASSICA”

## Bird Cage

The **CLASSICA** bird cage stands out with its Brilliant design, finishing quality. **CLASSICA** is made with all recommendation preserving for to provide ideal atmosphere for your Birds. widespan drawer will serve for easy cleaning and easy feeding. Additional space can serve to place many of accessories, food and liquid for your lovely Birds. Painted with no smell and TOYSAFETY paint according STANDARD EN71-3, with ecosolution and natural wax content provides up to 4 year protection even for outdoor usage. Metal details are painted with electrostatic paint.

- Widespan drawer
- Cupboards for additional space
- Magnetic locks for doors

Material: Pine or Spruce, Beech tree legs, Metal wire mesh, Galvanized metal sheet

Dimension: W107xH160xD67

Weight : ~ 50kg

can be packed in 1 Wooden box or 2 separate Carton box



# “MOON”

## Cushion



Stylish design of the **MOON** Cushion with plush and Jeans gives an attractive look to any interior .

- WASHABLE

Material: Imitation fur cushion, jeans Textile

Dimension: W70xH20xD70

Weight : ~ 3kg

can be packed in 1 Carton box



# “BlanPillo”

## Pet Cushion Bed

Stylish design of the **Blanpillo** Cushion with plush and Textile combination gives an attractive look to any interior .

- WASHABLE

Material: Imitation fur cushion, Textile

Dimension: W60xH10xD70

Weight : ~ 3kg

can be packed in 1 Carton box





# “CAVIE”

## Pet Cushion Bed

Stylish design of the **CAVIE** Cushion bed with combination plush and Textile gives an attractive look to any interior

- WASHABLE

Material: Imitation fur cushion, Textile

Dimension: W80xH50xD50

Weight : ~ 3kg

can be packed in 1 Carton box

# “MIXONI”

## Pet Cushion Bed

Stylish design of the **MIXONI** Cushion bed with plush and Textile gives an attractive look to any interior .

- WASHABLE

Material: Imitation fur cushion, Textile

Dimension: W80xH10xD60

Weight : ~ 4kg

can be packed in 1 Carton box



# “OAZIS”

## Pet Cushion Bed

Stylish design of the **OAZIS** Cushion bed with plush and Jeans gives an attractive look to any interior .

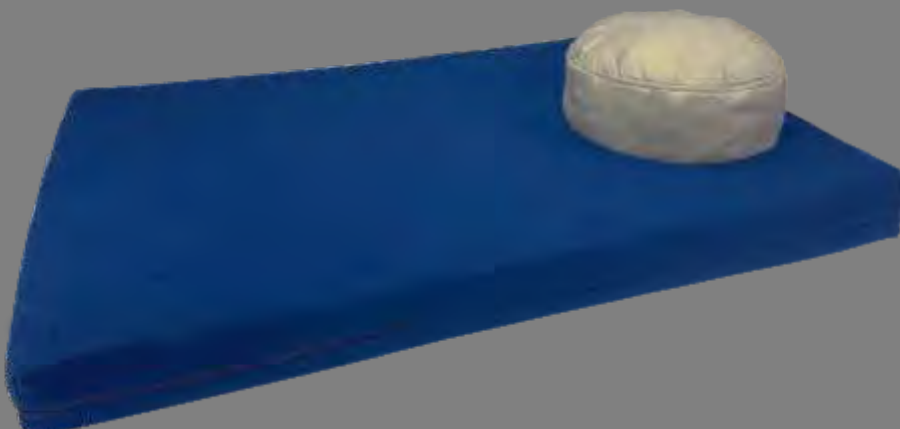
- WASHABLE

Material: Imitation fur cushion, Textile

Dimension: W100xH20xD60

Weight : ~ 5kg

can be packed in 1 Carton box





# OUTFIT

Item: Of11211



# OUTFIT

Item: Of11212



# OUTFIT

Item: Of11213



# OUTFIT

Item: Of11214





# OUTFIT

Item: Of11215



# OUTFIT

Item: Of11216





# OUTFIT

Item: Of11217



# OUTFIT

Item: Of11218



# OUTFIT

Item: Of11219



# OUTFIT

Item: Of11220







# Harness

Item: LC11211

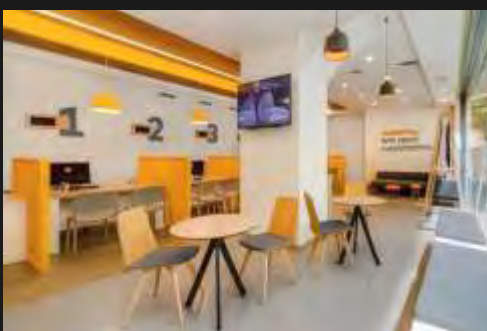


# Harness

Item: LC11212



# SOME MORE ABOUT WOODMASTER'S ABILITIES







WOODMASTER LLC

67 Ghoghoberidze Street

0165 Tbilisi, Georgia

+995 32 275 22 90

[info@woodmaster.ge](mailto:info@woodmaster.ge)

[www.woodmaster.ge](http://www.woodmaster.ge)